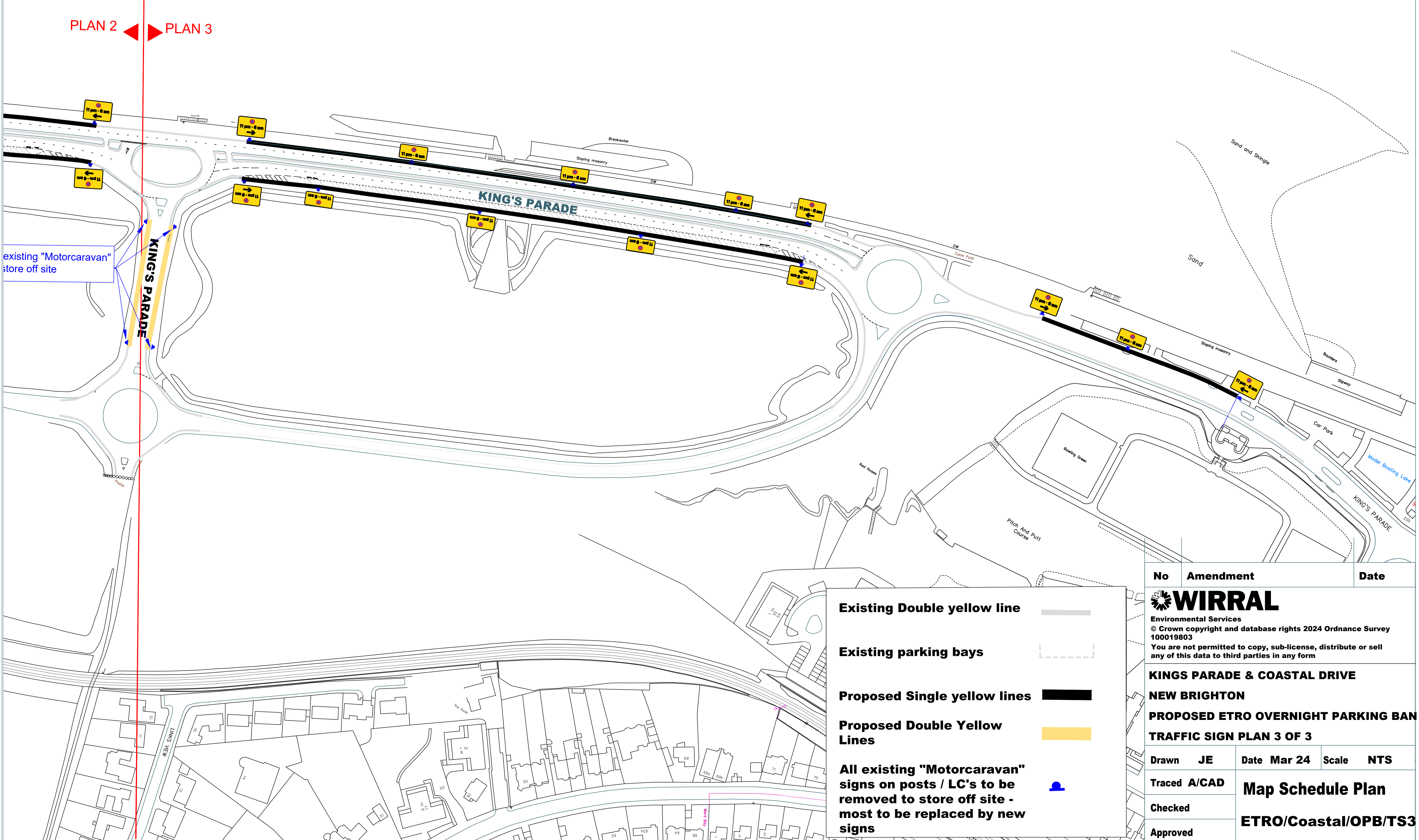





PLAN 2    PLAN 3





existing "Motorcaravan" store off site

**Existing Double yellow line** 

**Existing parking bays** 

**Proposed Single yellow lines** 

**Proposed Double Yellow Lines** 

**All existing "Motorcaravan" signs on posts / LC's to be removed to store off site - most to be replaced by new signs** 

No	Amendment	Date
 <b>WIRRAL</b> Environmental Services © Crown copyright and database rights 2024 Ordnance Survey 100019803 You are not permitted to copy, sub-license, distribute or sell any of this data to third parties in any form		
<b>KINGS PARADE &amp; COASTAL DRIVE NEW BRIGHTON PROPOSED ETRO OVERNIGHT PARKING BAN TRAFFIC SIGN PLAN 3 OF 3</b>		
Drawn	JE	Date Mar 24    Scale NTS
Traced	A/CAD	<b>Map Schedule Plan</b>
Checked		
Approved		<b>ETRO/Coastal/OPB/TS3</b>