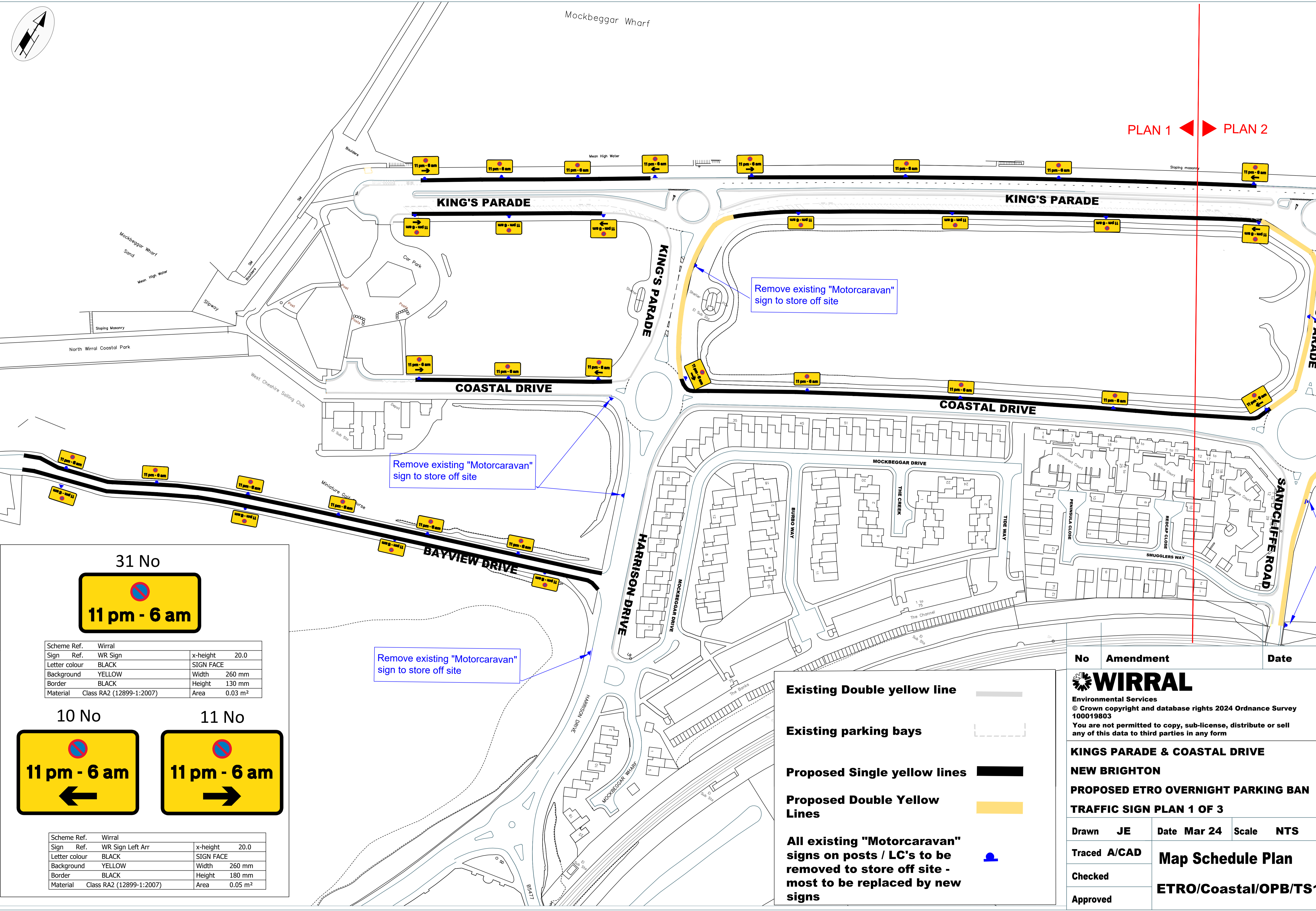


PLAN 1 ◀ ▶ PLAN 2



Scheme Ref.	Wirral	x-height	20.0
Sign Ref.	WR Sign	SIGN FACE	
Letter colour	BLACK	Width	260 mm
Background	YELLOW	Height	130 mm
Border	BLACK	Area	0.03 m ²
Material	Class RA2 (12899-1:2007)		



Scheme Ref.	Wirral	x-height	20.0
Sign Ref.	WR Sign Left Arr	SIGN FACE	
Letter colour	BLACK	Width	260 mm
Background	YELLOW	Height	180 mm
Border	BLACK	Area	0.05 m ²
Material	Class RA2 (12899-1:2007)		

- Existing Double yellow line**
- Existing parking bays**
- Proposed Single yellow lines**
- Proposed Double Yellow Lines**
- All existing "Motorcaravan" signs on posts / LC's to be removed to store off site - most to be replaced by new signs**

No	Amendment	Date
WIRRAL Environmental Services © Crown copyright and database rights 2024 Ordnance Survey 100019803 You are not permitted to copy, sub-license, distribute or sell any of this data to third parties in any form		
KINGS PARADE & COASTAL DRIVE NEW BRIGHTON PROPOSED ETRO OVERNIGHT PARKING BAN TRAFFIC SIGN PLAN 1 OF 3		
Drawn	JE	Date Mar 24 Scale NTS
Traced	A/CAD	Map Schedule Plan
Checked		
Approved		ETRO/Coastal/OPB/TS1